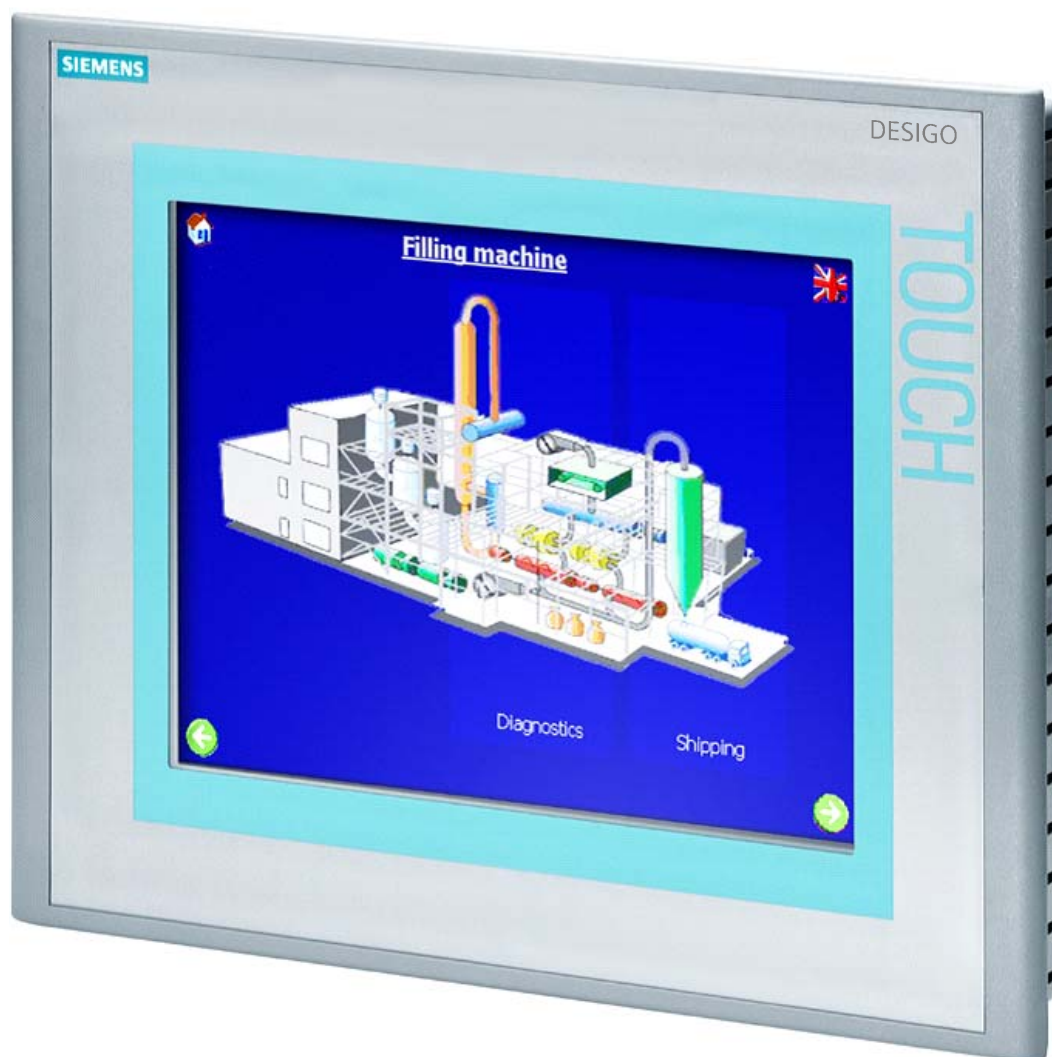


# SIEMENS



## **DESIGO™** **Touch Panels 10" MP270 and MP277** **Commissioning guide**

# Contents

---

<b>1</b>	<b>About this document .....</b>	<b>3</b>
1.1	Revision history .....	3
1.2	Referenced documents .....	3
1.3	Before starting .....	3
1.3.1	Trademarks .....	3
1.3.2	Copyright .....	3
1.3.3	Quality assurance .....	4
1.3.4	Document use / requirements .....	4
1.4	Downloads .....	5
<b>2</b>	<b>Commissioning touch panels .....</b>	<b>6</b>
<b>3</b>	<b>Operating system update .....</b>	<b>7</b>
3.1	Connecting cable .....	7
3.2	Prep OS update: .....	8
3.3	Run OS update .....	9
<b>4</b>	<b>IP settings .....</b>	<b>10</b>
4.1	Administrator settings .....	10
<b>5</b>	<b>IE settings .....</b>	<b>11</b>
5.1	Network configuration .....	12
5.2	Language setting .....	14
<b>6</b>	<b>Work with PX Web .....</b>	<b>15</b>

# 1 About this document

## 1.1 Revision history

Revision	Date	Changes	Section	Pages
_01	Jan-2008	First edition	--	--

## 1.2 Referenced documents

[1]	Touch Panel 10" MP270	CM1N9239
[2]	Touch Panel 10" MP277	CM1N9240
[3]	PX Web user's guide	CM110757

## 1.3 Before starting

### 1.3.1 Trademarks

The table below lists third-party trademarks used in this document and their legal owners. The use of trademarks is subject to international and country-specific legal regulations.

Trademark	Legal owner
BACnet™	American National Standard (ANSI/ASHRAE 135-1995)
Windows® ...	Microsoft Corporation <a href="http://www.microsoft.com/TRADEMARKS/trademark/nopermit.htm">http://www.microsoft.com/TRADEMARKS/trademark/nopermit.htm</a>

All product names listed in the table are registered (®) or non-registered (™) trademarks of the owner as listed in the table. We forgo any additional designations in this section (e.g. symbols such as ® and ™) in reference to the table above and in the interest of readability.

### 1.3.2 Copyright

This document may only be copied and distributed with the expressed permission of Siemens and may only be provided to authorized personnel / companies with specific technical expertise.

### 1.3.3 Quality assurance

---

The documentation was created with as much care as possible.

- All documents are subjected to regular content reviews.
- All required corrections are integrated into the next versions.
- Modifications or corrections to the described products result in modifications to these documents.

Please inquire about the latest version of the documentation.

Should you come across ambiguities when using this document or have criticisms or suggestions, please send them to the product manager at the nearest branch office or directly to the support team at headquarters:

#### Support address:

Siemens Switzerland Ltd  
Building Technologies Group  
International Headquarters  
Field Support 5500  
Gubelstrasse 22  
6301 Zug, Switzerland  
Phone +41 41 724 5500  
Fax +41 41 724 5501  
E-mail: [fieldsupport-zug.ch.sbt@siemens.com](mailto:fieldsupport-zug.ch.sbt@siemens.com)

### 1.3.4 Document use / requirements

---

Documents provided with our products (devices, applications, tools, etc.) or documents acquired in parallel, must be carefully and completely read prior to using the product.

Additional information on products and applications is available on the DESIGO homepage at

[https://intranet10.sbt.siemens.com/business/building\\_comfort/systems/desigo/](https://intranet10.sbt.siemens.com/business/building_comfort/systems/desigo/).

We assume that users of these products and documents are authorized and trained accordingly, and possess the appropriate technical expertise to use the products for their intended purposes.

Nevertheless, should ambiguities or problems exist when using the documentation, please contact the product manager at the nearest branch officer or directly at the support team.

Email: [fieldsupport-zug.ch.sbt@siemens.com](mailto:fieldsupport-zug.ch.sbt@siemens.com)

Please note that Siemens assumes no legal liability, to the extent permissible under the law, caused by non-compliance or improper compliance to the aforementioned items.

## 1.4 Downloads

---

### Service tool, SIMATIC ProSave

German

<http://support.automation.siemens.com/WW/llisapi.dll?func=ll&objAction=csView&lang=de&siteid=CSIUS&objId=13031587&lang=de>

English

<http://support.automation.siemens.com/WW/llisapi.dll?func=ll&objAction=csView&lang=de&siteid=CSIUS&objId=13031587&lang=en>

### SBT OS Image:

The latest SBT Touch Panel Operating System Images are available on the DESIGO Distribution Share:

[\\CH1W43110.ww020.siemens.net\Desigo\\_Distr\DESIGO\\_Supplements\DESIGO\\_TouchPanel\MP270](\\CH1W43110.ww020.siemens.net\Desigo_Distr\DESIGO_Supplements\DESIGO_TouchPanel\MP270)

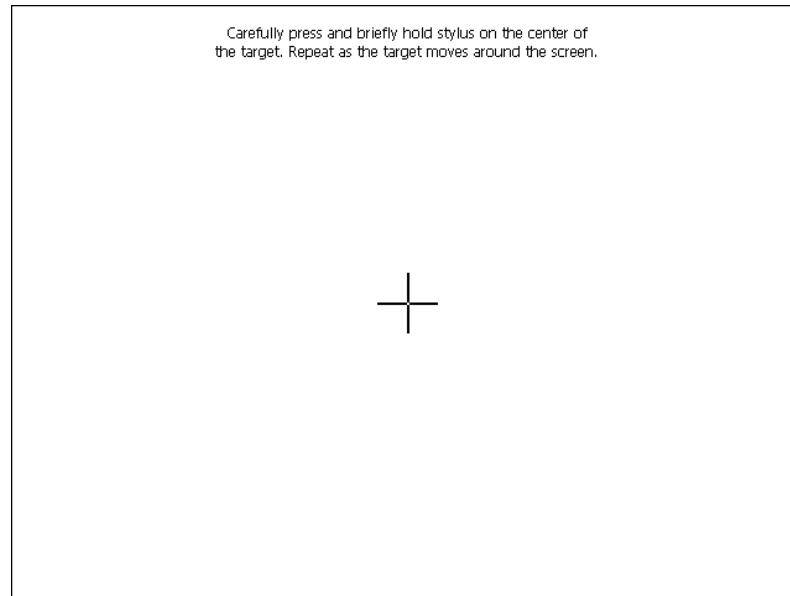
[\\CH1W43110.ww020.siemens.net\Desigo\\_Distr\DESIGO\\_Supplements\DESIGO\\_TouchPanel\MP277](\\CH1W43110.ww020.siemens.net\Desigo_Distr\DESIGO_Supplements\DESIGO_TouchPanel\MP277)

## 2 Commissioning touch panels

---

DESIGO Touch Panels are delivered preinstalled with the SBT operating system. As a result, you do not generally need to download images. A download is required for released patches. Refer to Section 3.

You must first calibrate a new touch panel (or following a successful OS update). The panel automatically starts up in calibration mode when switched on for the first time.



- Start calibration by tapping the middle of the crossbar.
- The device automatically moves the crossbar to the next calibration point.
- Repeat for each calibration point.
- Confirm upon completion within 30 seconds (tap the screen).  
The current settings are saved if you wait more than 30 seconds.



# 3 Operating system update

**Requirements:**  
**Service Tool**  
**SIMATIC ProSave**

The Service Tool SIMATIC ProSave must be installed first on a PC with a RS232 interface to update a newer version of the operating system (OS) on the touch panel. You can download the tool from the Internet (see Page 5).

## 3.1 Connecting cable

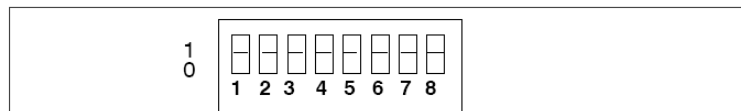
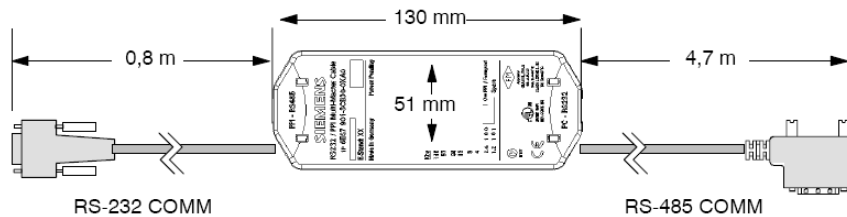
**MP270**

- A 9-pin RX232 cable is required for the **MP270**. At a minimum, it must include the following pins (crossed cable):

PC 000		TouchPanel 000
1		1
2	————	3
3	————	2
4		4
5	————	5
6		6
7		7
8		8
9		9

**MP277**

RS232/PPI-Multi-Master cable, order number 6ES7 901-3CB30-0XA0, required for the **MP277**.



kBaud	110	111	000	001	010	011	100	101
DIL 1-2-3	115.2	57.6	38.4	19.2	9.6	4.8	2.4	1.2

LED	Color	Description
Tx	Green	RS 232 send
Rx	Green	RS 232 receive
PP+	Green	RS 485 send

Set DIL switches 1-3 to 115.2 (same value as the baud rate selected on the ProSave tool).

DIL switches 4-8 must all be set to ZERO.

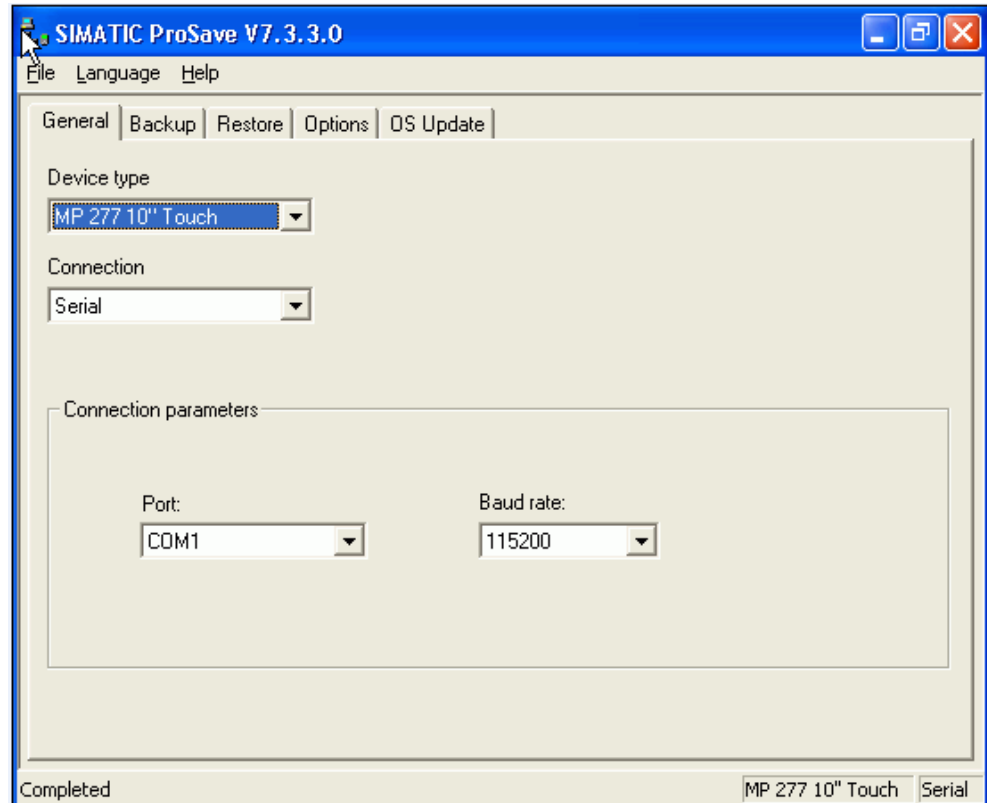
**Note**

Set to a lower baud rate, when the connection fails while updating the operating system.

## 3.2 Prep OS update:

Connect the touch panel to the PC using the cable (to the COM interface selected under **Connection Parameter**).

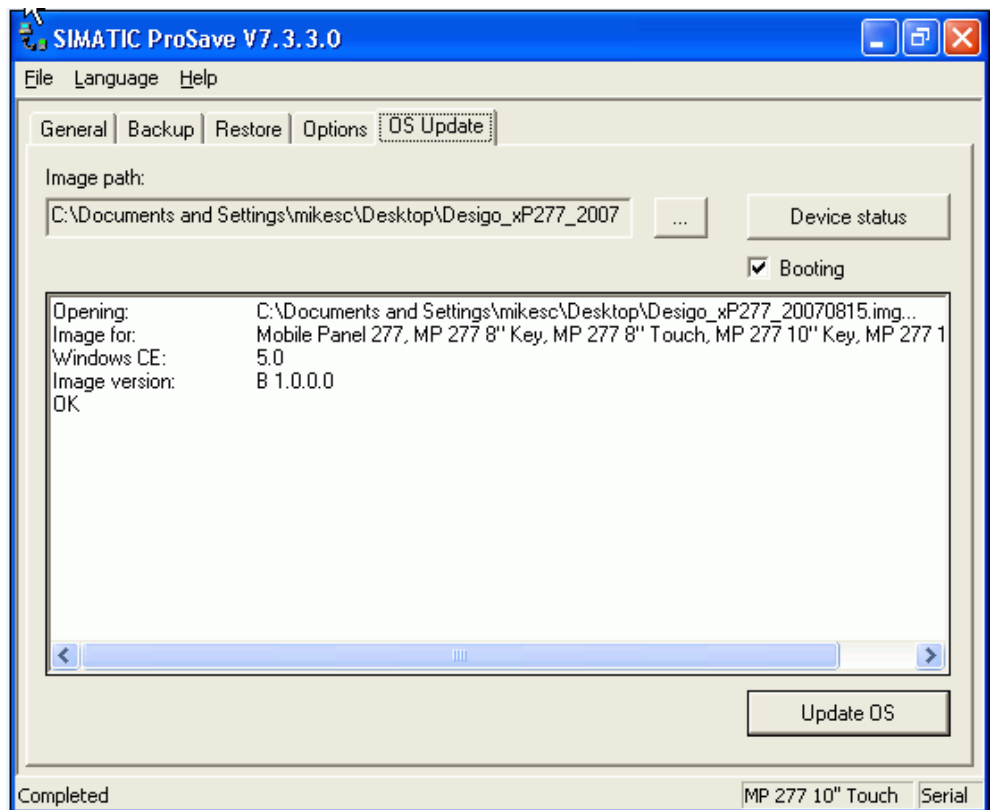
1. Click Windows Start and select ProSave.
2. Select the **General** tab.



3. **Device type:** Select MP270B Touch or MP277 10" Touch.
4. **Connection:** Select Serial.
5. **Port:** Select the port on the PC (e.g. COM1).
6. **Baud rate:** Select 115200  
(MP277: same value as the baud rate selected on the connecting cable).  
Select a lower baud rate, when the connection fails while updating the operating system.

### 3.3 Run OS update

1. Select the **OS Update** tab in the SIMATIC ProSave pane and set the image path to the image to be uploaded to the touch panel.
2. Check the **Booting** box and click **Update OS**.



3. Click **Update OS**.
4. Turn off and on the touch panel.  
Turning it on signals the PC to start.
5. The data is now sent to the panel.  
You can see the progress in the pane.
6. You are requested to reboot the panel after the data is sent (turn the panel off and on).
7. The update process is finished.

- Note
- The touch panel must be recalibrated after each initial program download.
  - Power to the touch panel cannot be interrupted during the download.
  - The **Device status** button displays the latest touch panel version (keep the **Booting** checked).

Reading the device status is a good way to check the RX232 connection.

Link to FAQ

<http://support.automation.siemens.com/WW/view/de/19701610>

# 4 IP settings

## 4.1 Administrator settings

Note The images below are of the MP270, but are nearly identical to the MP277.

The SBT application starts automatically following screen calibration. Normally, the navigation bar is displayed and the screen is gray, since the touch panel has yet to receive any saved settings.

1. Password screen with the user: *superuser*.  
Accept the user and enter the password *pxweb*.

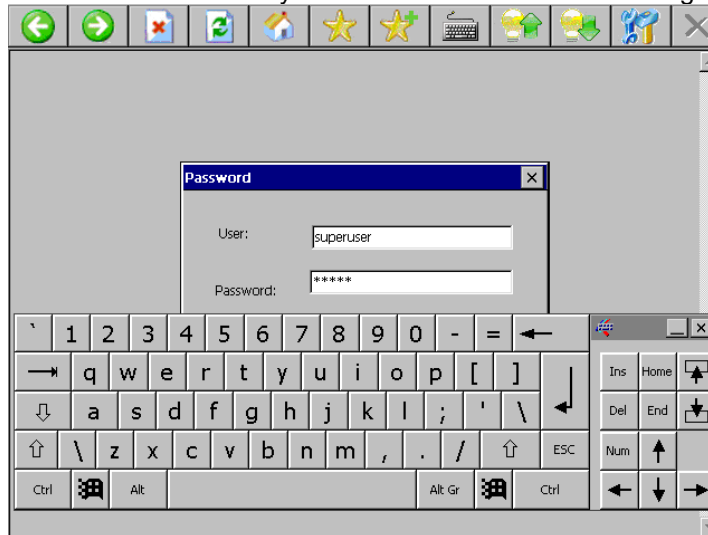


### Note!

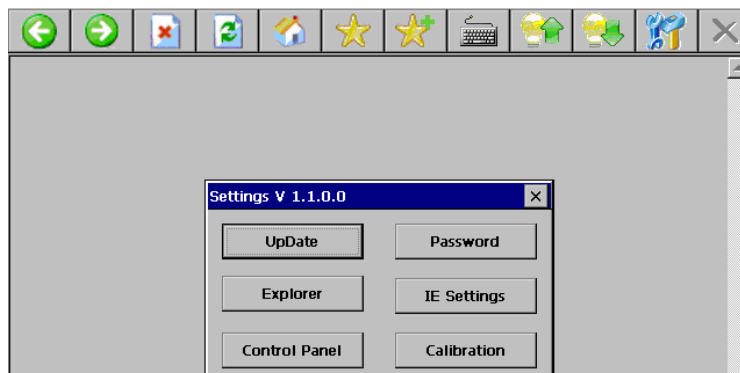
This action sets both the user and password. You may also select a different user and password. You must, however, remember the user and password to be able to log on at a later date!



2. Enable the software keyboard with the button on the navigation bar.



3. Tap **Tools** after saving the user and password to log on again. The **Settings** menu is displayed:



## 5 IE settings

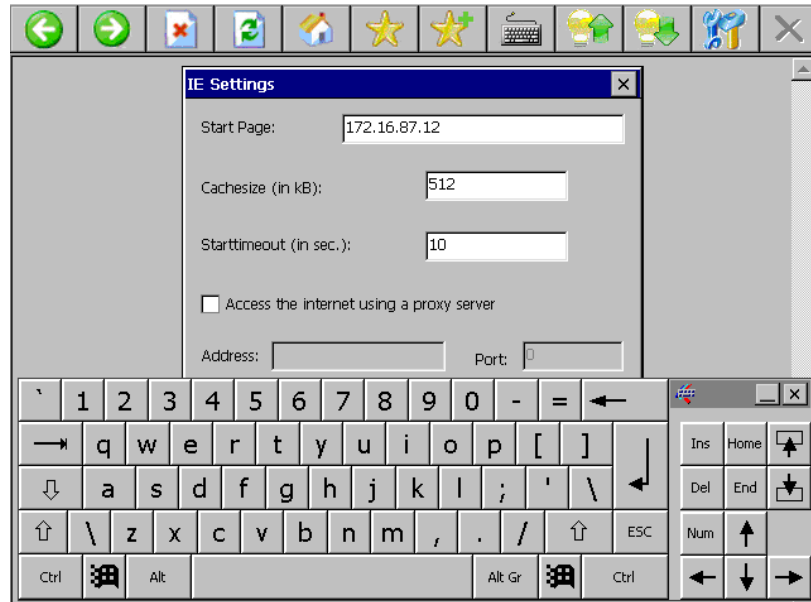
You must edit Internet Explorer settings for the DESIGO Touch Panel to reach PX-WEB.



1. Enable the software keyboard with the button on the navigation bar.



2. In the **Settings** menu, select the **IE Settings** key to enter data.



3. Enter the **start page** for PX Web (normally an IP address).
4. You can leave the **Cache size** at the default value "512".
5. The **Start Timeout** (the period before the web browser starts automatically) is set to 10 seconds as the default.

It should be increased to 15 or 20 seconds, when problems occur, (PX-WEB is unavailable or DHCP is used).

## 5.1 Network configuration

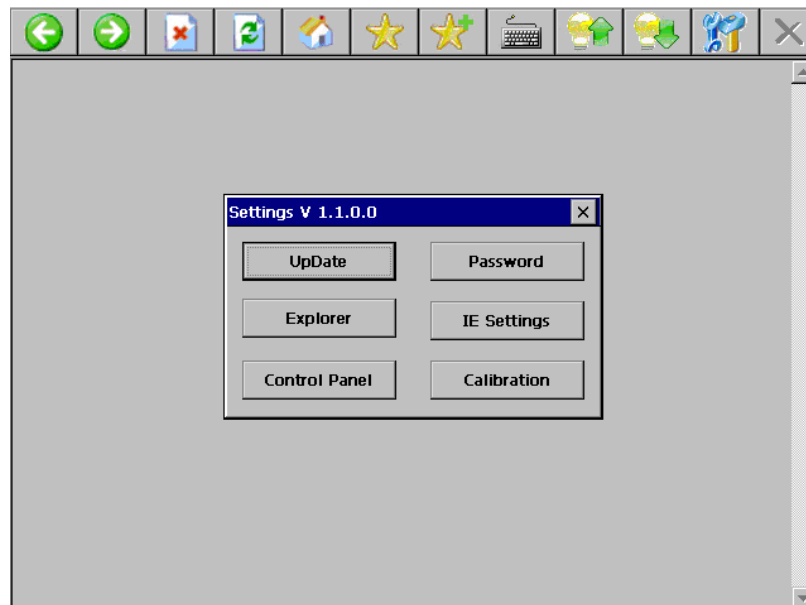
When there is no DHCP server in the network, you have to correctly set the IP address and the Subnet for the multipanel for the Ethernet connection to work.



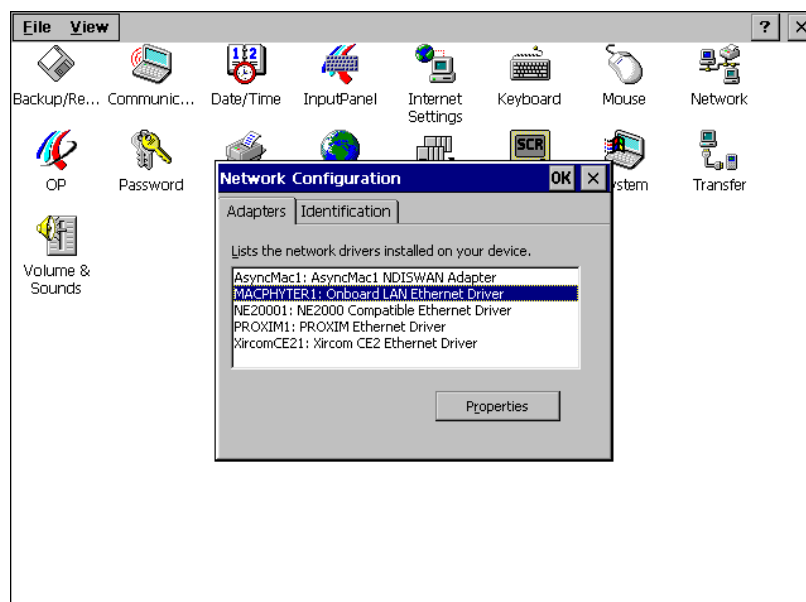
1. Activate the software keyboard by tapping the button on the navigation bar.

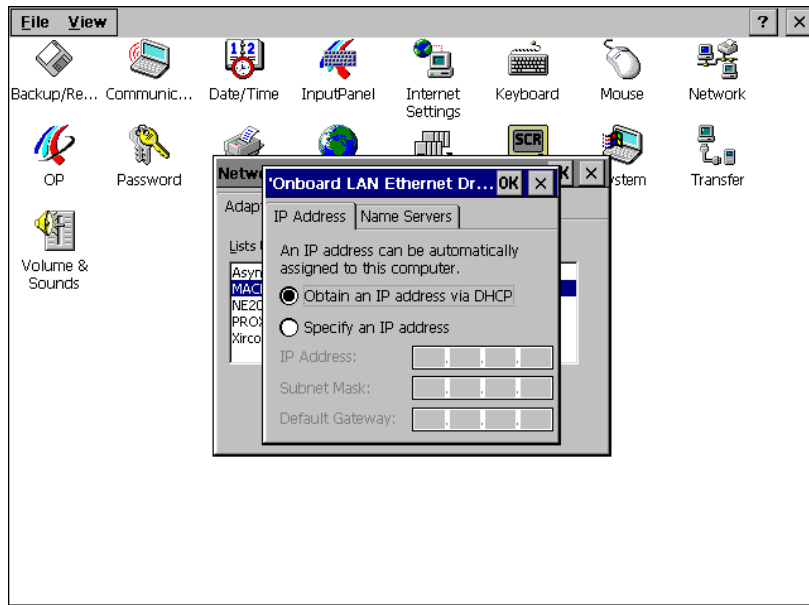


2. Open the **Control Panel** in the **Settings** pane to edit the IP configuration.

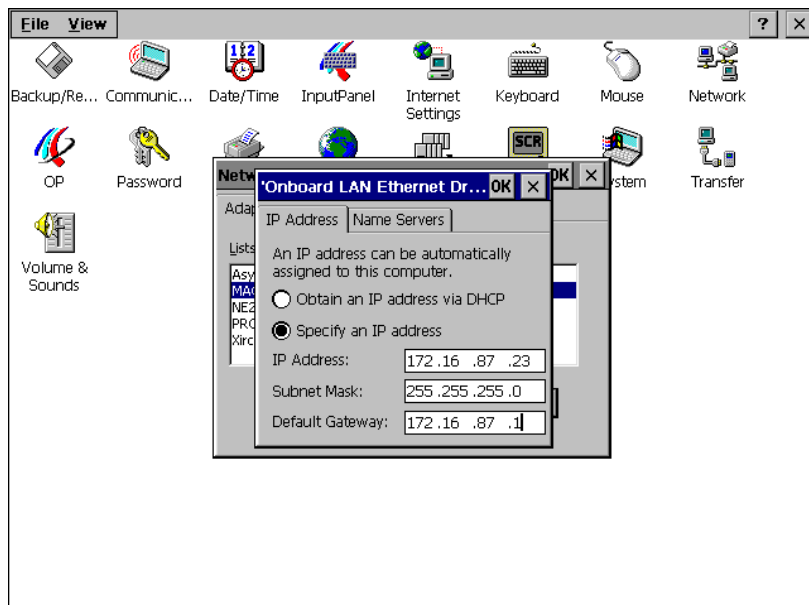


3. Tap the **Network** icon in the control panel.
4. Select the onboard LAN Ethernet driver and tap the Properties button. DHCP is enabled as the default.





5. Select **Specify an IP address** when no DHCP server is available or you need to set a fixed IP address for other reasons and enter the IP Address, Subnet Mask and Default Gateway.



6. Tap **OK** in the top right-hand corner to close any opened pane.
7. You must restart the DESIGO touch panel to assume the settings.
8. The web browser restarts automatically and connects to the PX Web.

## 5.2 Language setting

---

Language is also set in the control panel



1. Double tap the **Regional Settings** and set the desired language.



2. Double-tap the icon **OP** to save the language setting.

3. You now save the registry and the files in the window.

Note

Saved files may eventually display an error message that is not relevant.

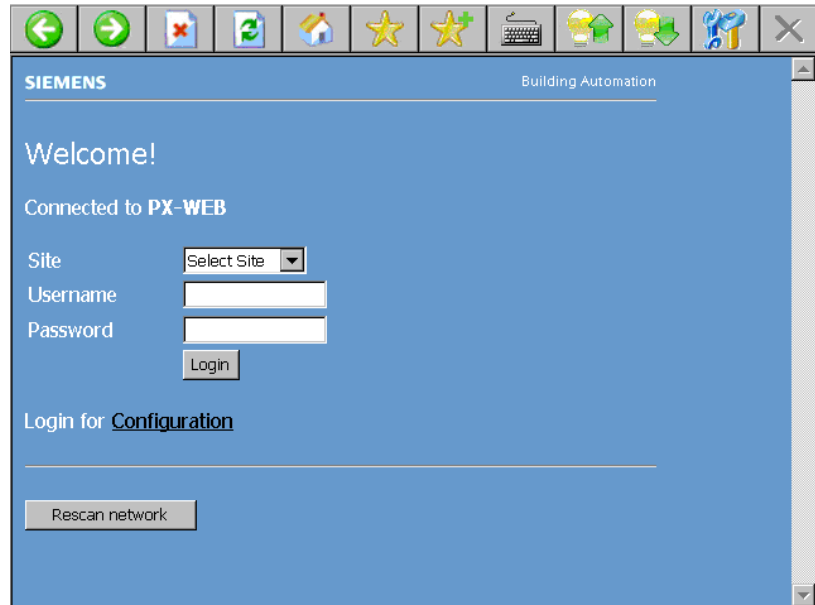
## 6 Work with PX Web

---

Restart the touch panel.

The PX Web log on mask appears.

Refer to the PX Web documentation [3] for additional notes on working with PX Web.



Siemens Switzerland Ltd  
Building Technologies  
International Headquarters  
Gubelstrasse 22  
CH-6301 Zug  
Tel. +41 41-724 24 24  
Fax +41 41-724 35 22  
[www.buildingtechnologies.siemens.com/](http://www.buildingtechnologies.siemens.com/)

© 2008 Siemens Switzerland Ltd  
Subject to change